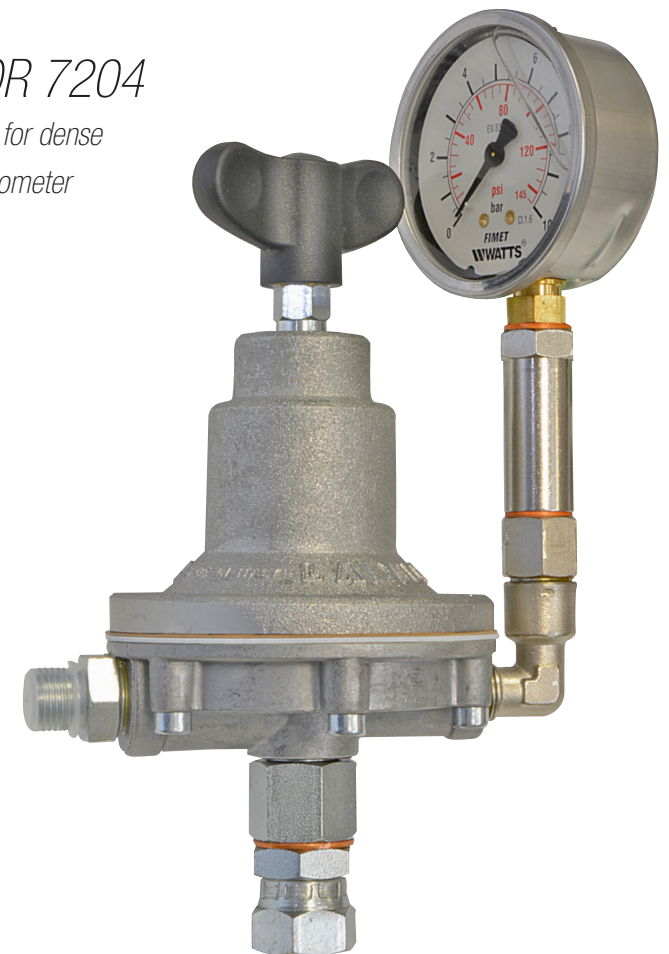


FLUID REGULATOR 7204

*0-14 bar stainless for dense
products with manometer*

VERSIONS:
7204/1
7204/2



FLUID REGULATOR 7204-7204/1-7204/2

Maximum inlet pressure: 20 bar

Regulation field: 0-14 bar

Max flow: 27 l/min

Material Inlet: BSPP 3/8" revolving female

Material Outlet: BSPP 1/4" male

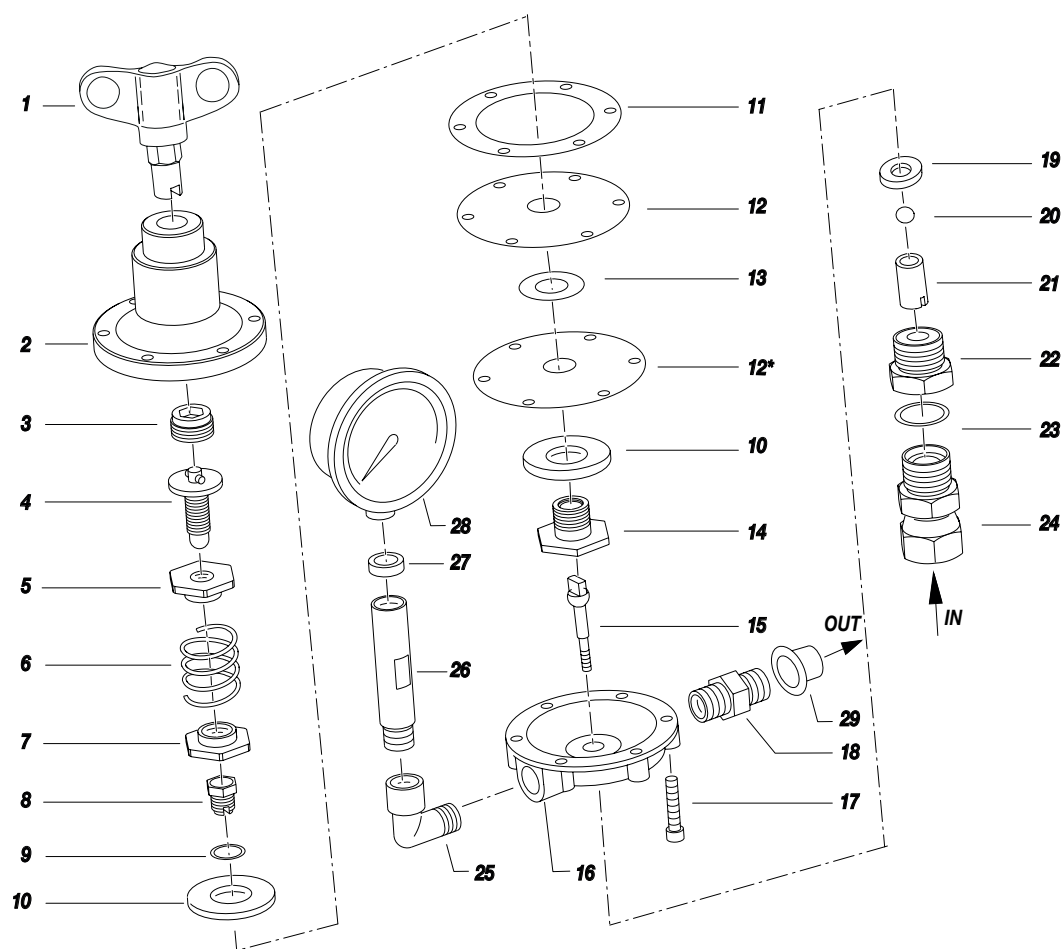
Regulator materials in contact with the product

Stainless steel 420/B

Stainless steel AISI 303

POM

PTFE



Pos.	Code	Q.ty	Description
1	7234	1	Adjusting key
2	7244	1	Regulator body
3	7212	1	Insert
4	7240	1	Screw
5	7213	1	Upper spring guide
6	7209	1	Spring
7	7214	1	Lower spring guide
8	7217	1	Plug
9	7215	1	Washer
10	7522	2	Washer
11	7521	1	Gasket
12	7519	1	PTFE diaphragm vers. 7204
	7520/1	1	Nylon diaphragm vers. 7204/1-7204/2
12*	7519	1	PTFE diaphragm vers. 7204-7204/2
	7520/1	1	Nylon diaphragm vers. 7204/1
13	7518	1	Gasket
14	7223	1	Shutter seat
15	7231	1	Shutter rod
16	7210	1	Diaphragm seat
17	7237	6	Screw
18	6147	1	Outlet nipple
19	33027/2	1	Ball seat
20	7221	1	Ball
21	7233	1	Bush
22	7227/2	1	Ball seat fitting
23	33010	1	Washer
24	23161	1	Inlet fitting
25	98377	1	Elbow
26	8064	1	Manometer extension
27	11623	1	Washer
28	7003	1	Manometer 0-16 bar
29	104	1	Plug 1/4"